

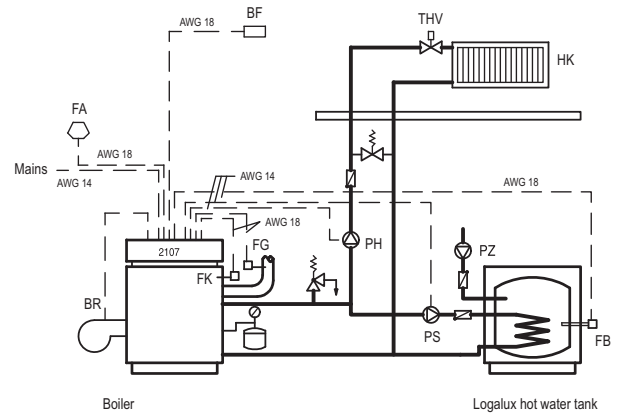
System examples (see reverse)

Configuration Example V2

Logamatic 2107 Controls

Basic equipment:
 Module CM222 controller
 Module NM282 mains and relay card

- Functions:**
- o Burner single-stage
 - o Heating Zone Pump
 - o Hot Water Tank Primary Pump
 - o Burner single-stage



Key to abbreviations:

- | | | | |
|-----|--------------------------------------|-----|-------------------------------------|
| AG | Expansion Vessel (DEV) | PSS | Solar Hot Water Tank Pump |
| BF | Remote Control BFU | FSK | Solar Collector Sensor |
| BR | Burner Connection | FSS | Solar Hot Water Tank Sensor |
| FA | External Temperature Sensor | SI | Safety Equipment |
| FB | Hot Water Tank Sensor | SH | Mixing Valve |
| FK | Common Supply Temperature Sensor | SP1 | Lightning Protection |
| FV | Supply Temperature Sensor | SMF | Air separator |
| HK | Heating Zone | TRK | Common Supply Temperature Regulator |
| PH | Heating Zone Pump | THV | Thermostatic Radiator Valve |
| PS | Hot Water Tank Primary Pump | TWH | High Limit Thermostat |
| PZ | Secondary Hot Water Circulation Pump | | |
| STB | Manual reset high limit (STB) | | |
- ☒ Check Valve

Note that system examples are only schematic illustrations!

Configuration Example V5

Logamatic 2107 Controls

Basic equipment:
 Module CM222 controller
 Module NM282 mains and relay card

- Functions:**
- o Burner single-stage
 - o Heating Zone Pump HK1
 - o Hot Water Tank Primary Pump
 - o Secondary Hot Water Recirculation Pump

Additional equipment:
 Module FM241 mixing card

- Functions:**
- o Actuator HK2
 - o Heating Zone Pump HK2
- Module FM242 two-stage
- Functions:**
- o Burner second stage or modulating burner
- Module FM244 solar
- Functions:**
- o Solar pump

WARNING: Water at or above 122°F (50°C) can scald!
 Always install a thermostatic mixing valve to limit the water temperature at the tap.

Configuration Example V4

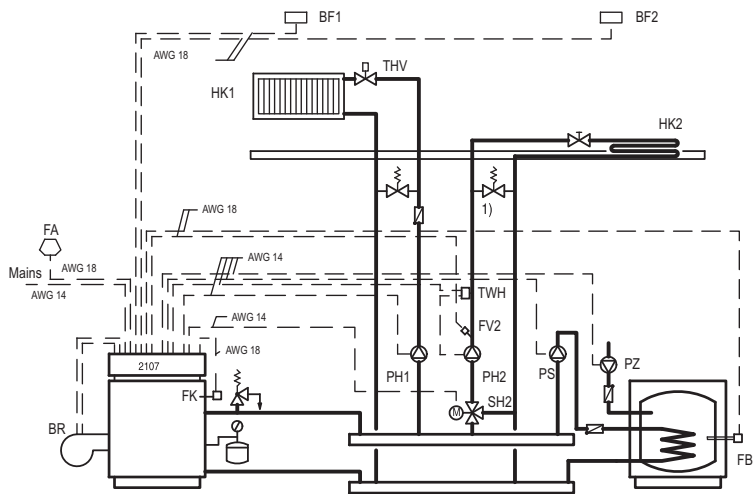
Logamatic 2107 Controls

Basic equipment:
 Module CM222 controller
 Module NM282 mains and relay card

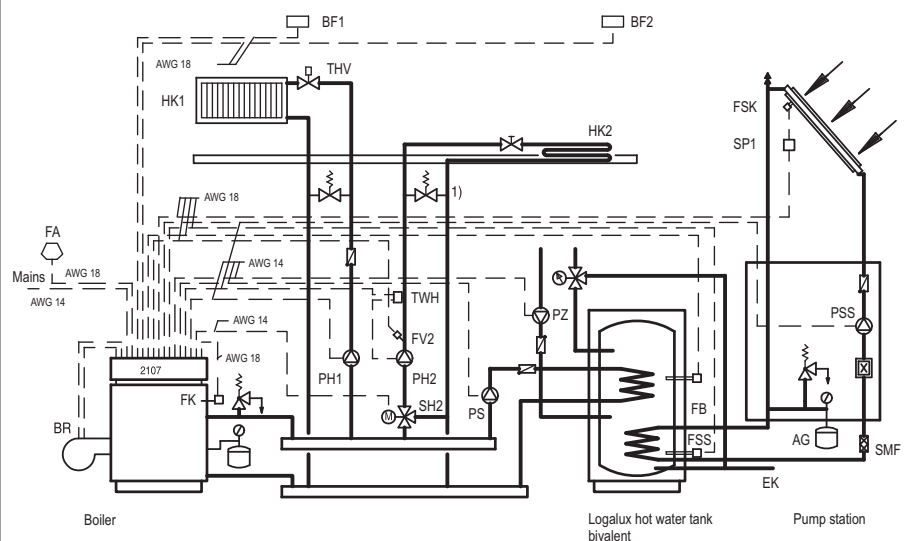
- Functions:**
- o Burner single-stage
 - o Heating Zone Pump HK1
 - o Hot Water Tank Primary Pump
 - o Secondary Hot Water Circulation Pump

Additional equipment:
 Module FM241 mixing card

- Functions:**
- o Actuator HK2
 - o Heating Zone Pump HK2
- Module FM242 two-stage
- Functions:**
- o Burner two-stage or modulating burner



1) only with single-room control



1) only with single-room control