

WINTERIZING & FREEZE PREVENTION

MODELS: ALL MODELS



WARNING

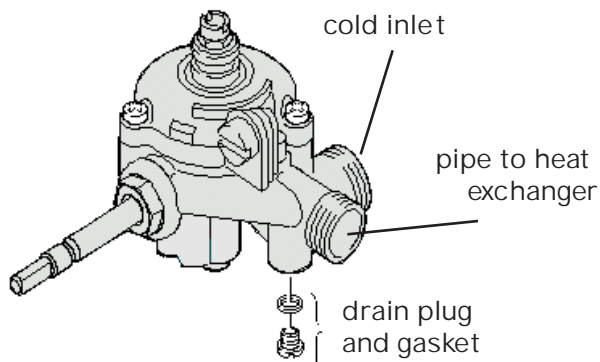
LP & NG ARE EXTREMELY FLAMMABLE SO TAKE EXTRA PRECAUTIONS WHEN PERFORMING ANY WORK TO THE HEATER

Please note that the instructions in the manual state that the water heater must not be installed in a location where it may be exposed to freezing temperatures. If the heater must be left in a space which is likely to experience freezing temperatures (less than 32° F) all water must be drained from the heater. If precautions are not taken, damage will not be covered by warranty.

Preparation

1. Shut off gas to heater.
2. Shut off water to building or just to water heater.
3. Open lowest faucet in building to drain lines or a hot water tap to relieve pressure in heater.
4. Position a catch pan below water connections to water heater.
5. Determine water valve type from descriptions and follow appropriate directions for draining.

Brass water valve: gold in color, some have 2 ports at back and 2 ports to heat exchanger, others only have single ports.



1. Disconnect cold inlet at back of water valve, save gasket.
2. Disconnect pipe to heat exchanger on right and left side (if applicable) of water valve. This will allow more air into the water valve. Allow all water to drain and reconnect.
3. Remove drain plug on the underside of the water valve. Save drain plug and gasket in a safe place or reinstall once all water has drained.

Polymide (plastic) water valve: grey in color, some have 2 ports at back and 2 ports to heat exchanger, others only have single ports.

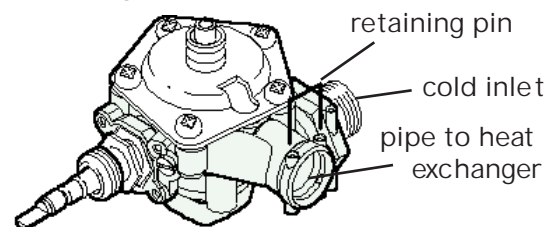


FIGURE A
125FX

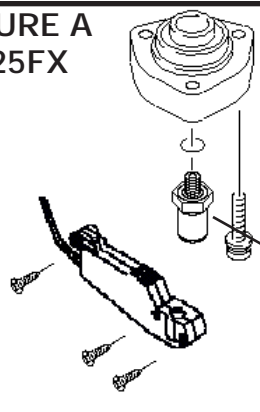
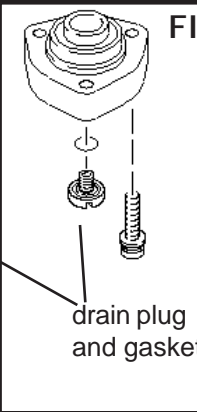


FIGURE B
125B
125HX



1. Disconnect cold inlet at back of water valve, save gasket.
2. Disconnect pipe to heat exchanger on right and left side (if applicable) of water valve by removing retaining pin. This will allow more air into the water valve. Allow all water to drain and reconnect.
3. 125B and HX-Remove drain plug on the underside of the water valve (Fig B). Save drain plug and gasket in a safe place or reinstall once all water has drained.
4. 125FX-Loosen 3 screws holding 2 halves of microswitch just enough to be able to remove microswitch from water valve. Remove drain plug (Fig A), let all water drain, reinstall drain plug and microswitch once all water has drained. **

****125FX:** If sparking mechanism does not spark with a sufficient flow rate then the microswitch needs to be adjusted.

- a. Close water tap and Turn power off
- b. Remove screw cap and turn adjusting screw in (clockwise) until it stops.
- c. Turn power on
- d. Turn adjusting screw out (counter clockwise) until sparking begins, stop;
- e. Turn adjusting screw in (clockwise) one half turn (.5) to complete calibration

