

Compressor Replacement

Models: HP200-1 Heat Pump Water Heater



BOSCH



WARNING:

This is to be performed by a licensed refrigeration technician only.



WARNING:

Disconnect power to the unit prior to performing any servicing activities.

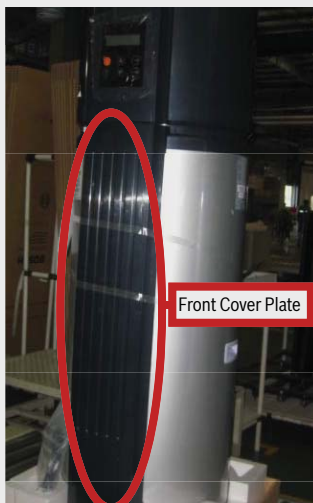


Piercing valves are not included.

Compressor Removal

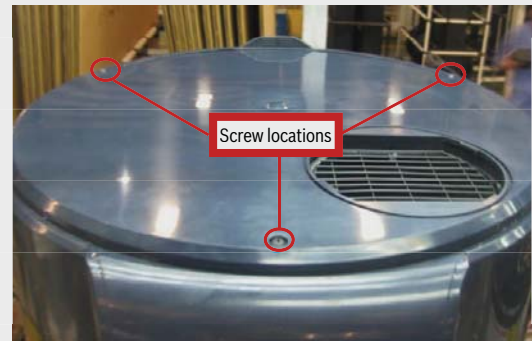
1. Remove the front cover plate (magnetically attached, the front cover plate is included in the exterior housing and can be removed directly. See Fig. 1).

Figure 1



2. Using a Phillip's head screwdriver, remove the top cover (remove and retain these three screws, see Fig. 2). Lift the cover off and set aside.

Figure 2



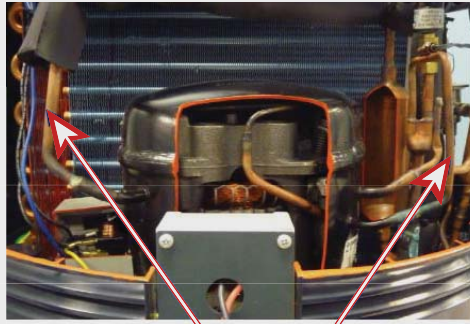
3. Remove the front cover and the back cover (remove four screws, two are on the left and two are on the right. See Fig. 3).

Figure 3



4. Reclaim the R134a refrigerant charge from suction and discharge (see piercing location in Fig. 4) per local and national regulations, and seal off the pipe connected the compressor (2 brazed connections – Suction and Liquid Discharge).

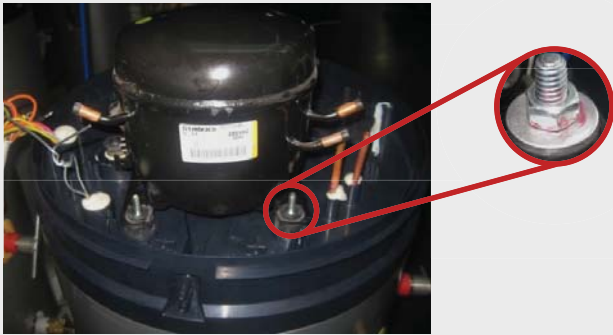
Figure 4



Place piercing valves here

- Remove the compressor mounting hardware, and then lift the compressor off the mounting studs (remove and retain the four nuts and washers, see Fig. 5).

Figure 5



- With the power confirmed to be off, disconnect the wires (see Fig. 6), and then remove electrical control box (see Fig. 7).

Figure 6



Figure 7



Compressor Installation

- Install the new compressor and braze the connecting tubes. Evacuate the system and charge the refrigerant from piercing locations (see Fig. 4). Refer to ratings plate for charge type and quantity.
- Attach the control box (Fig. 7) to the evaporator and reconnect all wiring. Be sure to connect compressor electrical connections (see Fig. 8) and blue, orange and brown (L to R) relays to the compressor (see Fig. 6).

Figure 8



WARNING:

Connect all wires in accordance with the electrical wiring diagram provided in the installation manual.

- Reassemble the front cover, back cover, and front cover plate. Make sure unit is operational per installation manual.



BOSCH

Bosch Thermotechnology Corp.
50 Wentworth Avenue
Londonderry, NH 03053

Tel: 1-866-642-3198
Fax: (603) 965-7581
www.bosch-climate.us