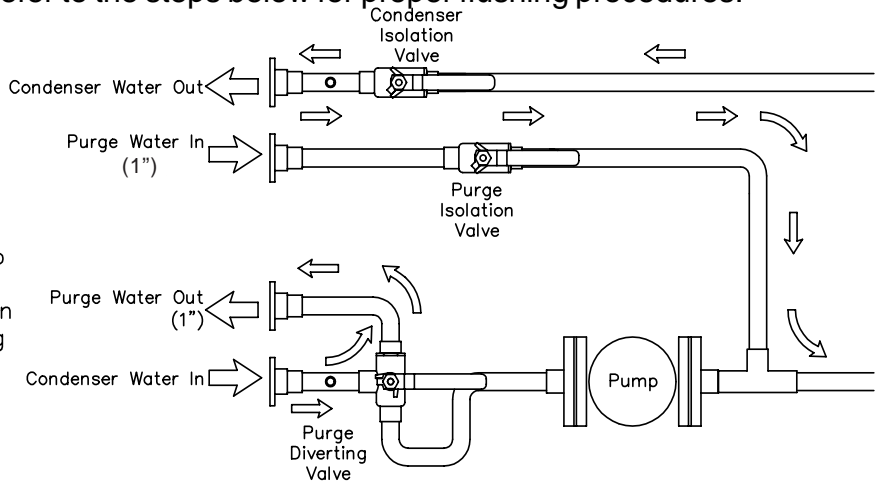




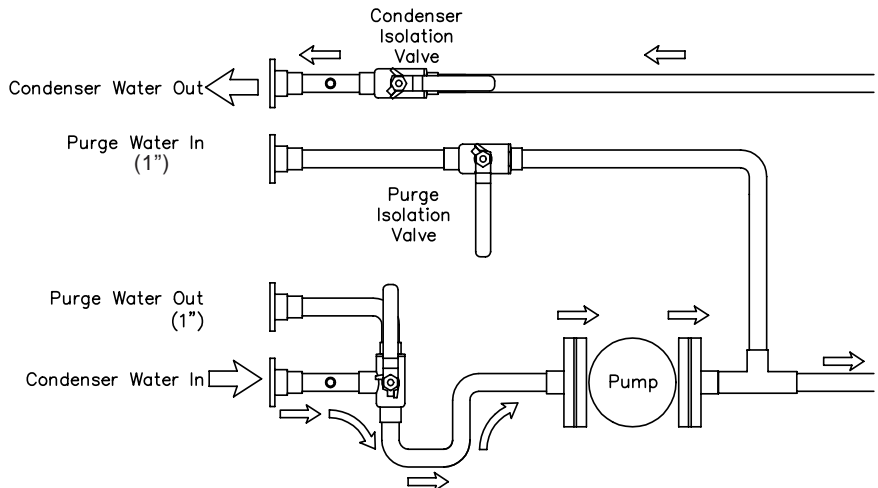
OPTIONAL INTERNAL GROUND LOOP PUMPING PACKAGE

Before operating the unit it is imperative that the system be purged of air and foreign material. This is accomplished by flushing the loop with a high volume of fluid at high velocity. A flush cart and associated equipment will be required for this operation. The unit internal pump can not be used for this purpose. Please refer to the steps below for proper flushing procedures.

Step 1:
 Set Valve Handles in Purge Position.
 Connect Purge Kit and flush Loop and Unit.
 Take care to connect Purge Kit in the proper direction – connecting Purge Kit backwards can foul the Loop Pump.



Step 2:
 Set Valve Handles in Running Position.
 Disconnect Purge Kit and Cap Connections.



Servicing Loop Pump:
 Close Condenser Isolation Valve and turn the Purge Valves to the purge position. Keep Purge Caps in place.
 After servicing Pump refill unit as much as possible through UPPER purge fitting before turning valves to Run position.

