

Product Information Notice

Models: Buderus GB312 (all models)

Subject: External Condensate Drainage Requirements



BOSCH

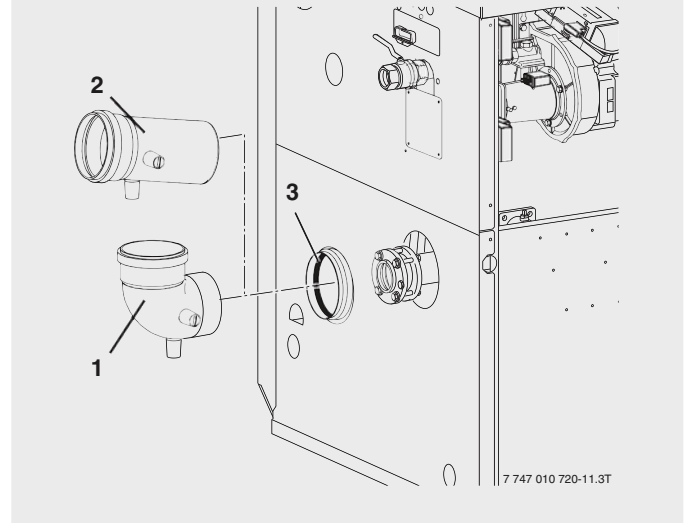
Summary

The flue system of installed GB312 should be designed to drain away acidic condensate that accumulates in the flue before it reaches the boiler. Excessive condensate draining back to the boiler may result in corrosion of the condensate drain pan (Fig. 1).

Figure 1



Figure 2



- [1] Flue pipe adaptor (available separately)
- [2] Flue pipe adaptor (available separately)
- [3] Fitted gasket

Field Action

Existing GB312 installations should be checked annually for signs of condensate pan corrosion and flue systems should be adjusted to properly drain condensate away from the boiler.

Use the selected flue system manufacturer's appropriate flue pipe adaptor (Fig 2). Adaptors come equipped with condensate drain nipple.

Use a suitable siphon to drain condensate that accumulates in the flue before it reaches the boiler (maximum distance to boiler: 6ft).

- ▶ Ensure that the condensate drain pipe is adequately dimensioned (at least 3/4")
- ▶ Install the vent pipe with an upward slope (1/4" per foot)



BOSCH

Bosch Thermotechnology Corp.
50 Wentworth Ave
Londonderry, NH 03053
Tel: (866) 642-3198
Fax: (603) 965-7581
www.boschheatingandcooling.com